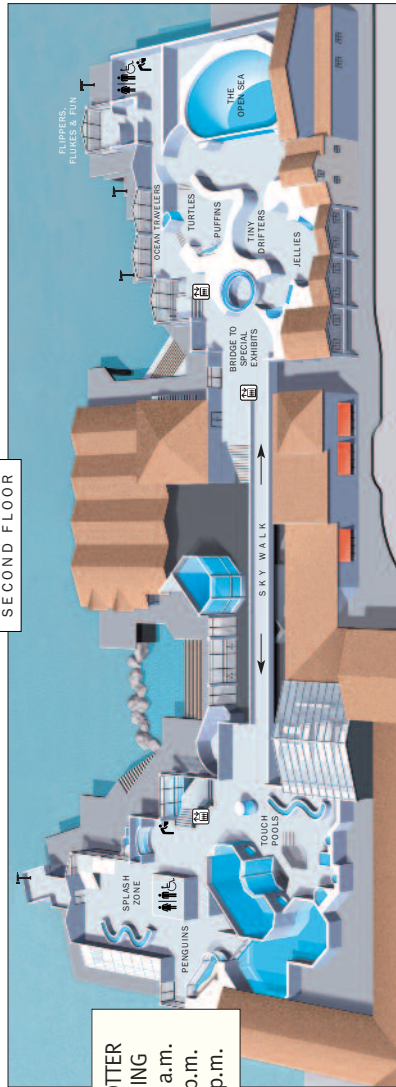
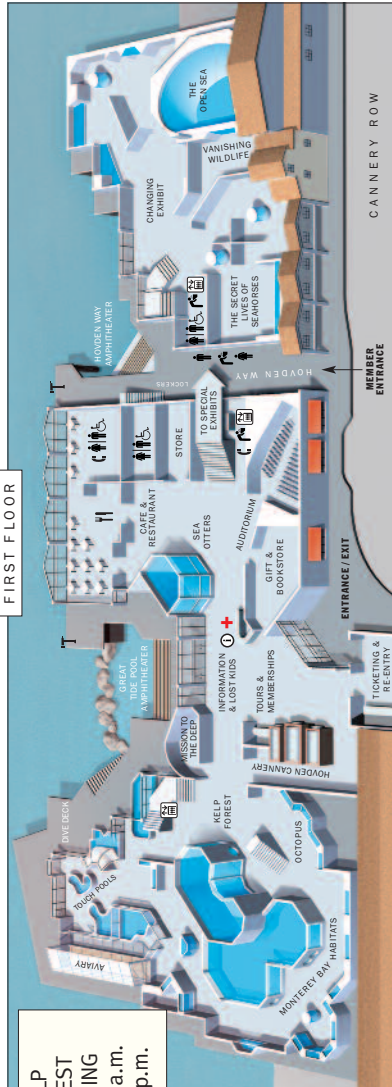


# Map



SEA OTTER  
FEEDING  
10:30 a.m.  
1:30 p.m.  
3:30 p.m.



KELP  
FOREST  
FEEDING  
11:30 a.m.  
4:00 p.m.

# MONTEREY BAY AQUARIUM

# Sharks: The Real Story



**NAMES:**

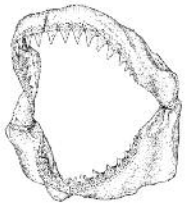
Ocean Explorers  
Observation Guide

# Sharks: The Real Story Review



## What did you learn?

- Sharks, skates and rays are fishes with a set of special characteristics.
  - They have a skeleton made of cartilage.
  - They have more than one opening to the gills (called gill slits).
  - They have special scales (called dermal denticles or “skin teeth”).
  - They are all meat eaters (carnivores).
  - Male sharks, skates and rays have claspers (organs used to make baby sharks, skates and rays).
- Sharks, skates and rays are incredibly diverse. Each species is adapted for survival in its own way.
- The Monterey Bay Aquarium is a friend to sharks and you can be a friend to sharks, too.

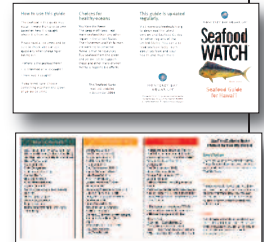


*There are approximately 15 different types of sharks, skates and rays at the Monterey Bay Aquarium. Try to find as many as you can during your visit today!*

# Conservation Connections

## How can you help care for sharks?

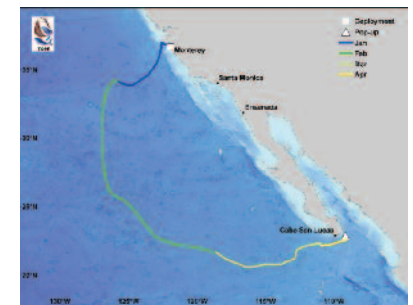
- Share what you learned today about sharks, skates and rays with others.
- Encourage the adults at home to use the Monterey Bay Aquarium’s Seafood Watch pocket guide when they buy seafood. To learn more, visit: [www.seafoodwatch.org](http://www.seafoodwatch.org)



## Learn more about sharks back at school and at home!



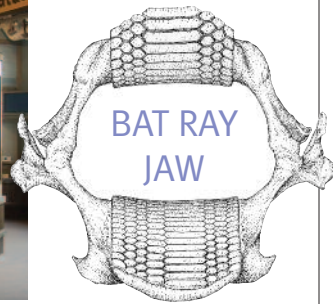
- See what your favorite sharks in the Kelp Forest are doing by using Monterey Bay Aquarium’s webcams: [www.montereybayaquarium.org/efc/cam\\_menu.aspx](http://www.montereybayaquarium.org/efc/cam_menu.aspx)
- Learn about shark tagging, see where tagged sharks are swimming and discover what scientists are learning about sharks. Visit the Tagging of Pacific Predator’s (TOPP) website: [www.topp.org](http://www.topp.org)



# Coastal Wetland to Sandy Shore Nature Center

## All sharks, skates and rays are carnivores! What do bat rays eat?

Bat rays are carnivores with flat, grinding teeth. They use their fins to uncover animals living in the sand or mud.



In areas with muddy bottoms, what might a bat ray consume (eat)? Look around the Nature Center for clues!

Clam



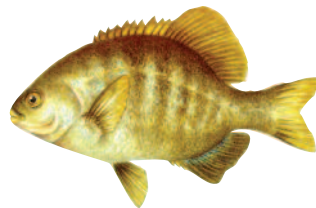
Eelgrass



Fat innkeeper worm



Perch



# Aquarium-wide

## Hey shark sleuths, can you find these sharks, skates and rays?

Look for these animals and note in which habitat you found them.



Skate  
*Habitat:*



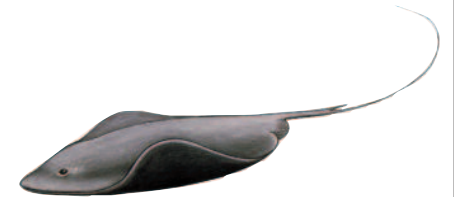
Horn shark  
*Habitat:*



Swell shark  
*Habitat:*



Hammerhead shark  
*Habitat:*



Pelagic ray  
*Habitat:*



Shovelnose guitarfish  
*Habitat:*

# Kelp Forest

## Are there more male or female sharks in the Kelp Forest?

Male sharks, skates and rays have claspers.  
Female sharks, skates and rays do not have claspers.



Claspers on male skate

Look closely at the leopard sharks. Do you think there are more male or female leopard sharks in this exhibit?

- More males       More females



# Monterey Bay Habitats

## Sharks, skates and rays have more than one opening to their gills.

In the box to the right of each shark, write how many gill slits you see on each side of the shark's head.



Leopard shark



Sevengill shark



Spiny dogfish  
(This shark has a spine in front of each fin on its back.)



**BONUS:** Where are the gill slits located on a bat ray? (check one)

- Behind the eyes on top of the body  
 Behind the mouth on the bottom of the body